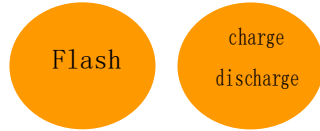
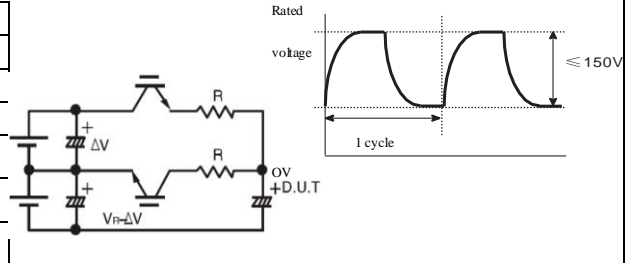


- Safety protection controller, photo studio lamp controller, Flash trigger, Digital camera, SLR camera flash lamp. .
- Laser cosmetic instrument ,IPL Hair removal skin rejuvenation
- Medical instrument, Pulse circuit, Charge discharge circuit

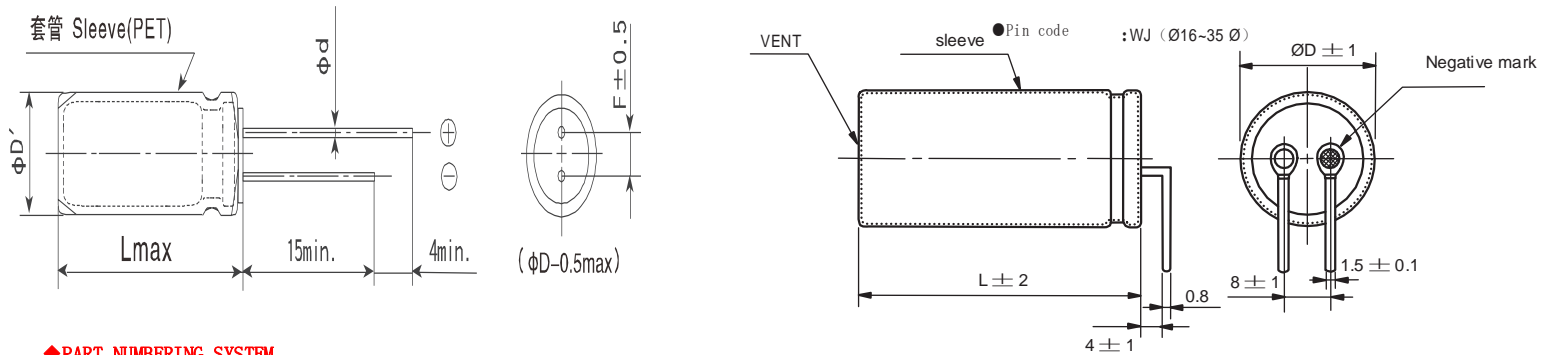


**SPECIFIC ATIONS**

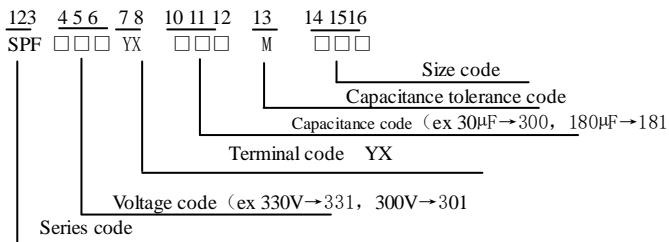
items	characteristics	
Category temperature Range	-20~+105°C	
Rated voltage Range	300-360VDC	
Capacitance Tolerance	± 5% (M)	20°C、120HZ
Leakage Current	I=1XCR(μA) 20°C、(After 5 minutes application of voltage)	
Dissipation Factor (MAX)	≤0.06	20°C、120HZ
charge and discharge (+105°C)	Charge and discharge at rated voltage at 15~35°C in every 1seconds for 1000000times via Xe flash tube with discharge resistanceof0.7~1.0Ω	
	Charging voltage	Rated voltage
	discharge voltage	Rated voltage≤0.3
	Charge and discharge frequency	see listing
	Charge and discharge resistor	see listing
	Capacitance change	≤±20% of the initial value
	D. F. (tanδ)	≤200% of the initial specified value
	Leakage current	≤The initial specified value
Shelf Life	The following specifications shall be satisfied when the capacitors are restored to 20°C after exposing them for 1000 hours at 105°C without voltage applied. Before the measurement, the capacitor shall be preconditioned by applying voltage according to Item 4.1 of JIS C 5101-4	
	Capacitance change	≤±20% of the initial value
	D. F. (tanδ)	≤200% of the initial specified value
	Leakage current	≤The initial specified value



**DIMENSIONS [mm]**



**PART NUMBERING SYSTEM**



ØD	5	5.5	6.3	6.5	7	7.5	8	8.5	9	9.5	10	10.5	11
F	2	2	2.5	2.5	2.5	2.5	3.5	3.5	3.5	3.5	3.5	5.0	5.0
Ød	0.5	0.5	0.5	0.5	0.5	0.5	0.5	0.5	0.5	0.5	0.5	0.6	0.6



ØD	12	12.5	13	13.5	14	14.5	15	15.5	16	17	18	20
F	5.0	5.0	5.0	5.0	7.5	7.5	7.5	7.5	7.5	7.5	7.5	7.5
Ød	0.8	0.8	0.8	0.8	0.8	0.8	0.8	0.8	0.8	0.8	0.8	0.8

Special sizeØD, L, other agreement

**SPECIFIC ATIONS**

◆rated capacitance、Rated voltage、Rated ripple current (mA/105°C, 100/120HZ) Current and size: ØDxL(mm)

capacitance	voltage	ESR	Leakage current	size	capacitance	voltage	ESR	Leakage current	size
30	300	2.947	30	10*16	140	310	0.632	140	12.5*30
30	310	2.947	30	10*18	140	310	0.632	140	13*28
47	300	1.881	47	10*19	140	330	0.632	140	12.5*30
47	310	1.881	47	10*21	140	360	0.632	140	12.5*35
50	300	1.768	50	10*21	140	360	0.632	140	13*34
50	310	1.768	50	10*21	140	360	0.632	140	14.5*28
50	360	1.768	50	10*26	160	300	0.553	160	12.5*30
55	300	1.608	55	12.5*15	160	300	0.553	160	13*29
55	310	1.608	55	10*23	160	300	0.553	160	16*23
60	300	1.474	60	10*23	160	310	0.553	160	12.5*32
60	310	1.474	60	10*25	160	310	0.553	160	13*31
60	360	1.474	60	10*30	160	310	0.553	160	16*22
70	300	1.263	70	10*25	160	360	0.553	160	12.5*39
70	310	1.263	70	10*26	160	360	0.553	160	13*38
80	300	1.105	80	10*28	160	360	0.553	160	16*25
80	310	1.105	80	10*30	180	300	0.491	180	12.5*33
100	300	0.884	100	10*35	180	300	0.491	180	13*32
100	300	0.884	100	12.5*20	180	300	0.491	180	18*22
100	310	0.884	10*37	12.5*21	180	310	0.491	180	12.5*35
100	360	0.884	100	10*45	180	310	0.491	180	13*33
100	360	0.884	100	12.5*27	180	310	0.491	180	16*24
110	300	0.804	110	10*37	180	310	0.491	180	18*22
110	300	0.804	110	12.5*22	180	360	0.491	180	12.5*44
110	310	0.804	110	10*40	180	360	0.491	180	13*42
110	310	0.804	110	12.5*24	200	360	0.442	200	13*46
110	310	0.804	110	13*23	200	360	0.442	200	16*36
120	300	0.737	120	10*40	200	360	0.442	200	18*35
120	300	0.737	120	12.5*24	220	360	0.402	220	13*50
120	300	0.737	120	13*23	220	360	0.402	220	16*38
120	310	0.737	120	10*40	250	360	0.354	250	16*42
120	310	0.737	120	12.5*24	250	360	0.354	250	18*38
120	310	0.737	120	13*23	270	360	0.327	270	16*46
120	360	0.737	120	12.5*30	270	360	0.327	270	18*39
120	360	0.737	120	13*24	300	360	0.295	300	16*48
140	300	0.632	140	13*24	400	360	0.295	300	18*43
140	300	0.632	140	12.5*25	500	360	0.295	300	20*32

## capsun flash series

1、SPF over voltage is only 330WV, this year added 310V, 360V two kinds of voltage. Because of particularity of camera design. Especially digital camera size thinner, smaller and smaller, if the guests have special or super small size requirements, For the details, please contact representative of capsun;

2、capsun SPF series, CDF series for studio, digital camera, professional photographic equipment, flash capacitor. Before the flash capacitor installation ways mainly have the lead type, lug type, Now added can be installed in many ways, for example (snap-in type、long lug type, Multi pin type ,screw type) ;

For example: Highway bayonet shooting, Infrared security bayonet, Field pulse signal, Laser pulse power, Also taking into account the larger current, use Screw type Installation For example, 2500  $\mu$  F360WV diameter 50mm, height 75mm flash capacitors.

3、capsun Electronics SPF、CDF series long life under rapid charge and discharge use Widely used in traffic lights, apply to traffic lights, Navigation lights, Automobile headlamp, Obstruction light, strobe lights roof warning light, High speed flash, Traffic speed flash, HD Bayonet, Electronic police red light violation Capture flash, Stage a strobe light etc Laser cosmetic instrument IPL hair removal skin rejuvenation E light beauty instrument Prostate therapeutic instrument Electronic medical pulse Electron accelerator etc, Flash life (charge discharge according to 0.3WV) 30000000 time, For special products, The life span of a 100 million times; For example, 50  $\mu$  F360V can also be used in special boost circuit. Adopt the latest structure design of capsun, adopt the electrolyte system from MATSUSHITA , suitable for high ripple and high current circuit, with better performance than CDF series of RUBICON, The electrical parameters of the total beyond peer

4、A、Because SPF and CDF are special capacitor, So the product approval, there will be a unique code to the guests;

B. Because of the difference between the circuit of charge and discharge of the discharge, sometimes need to ask for the circuit diagram of Because of the difference between the circuit of charge and discharge of the discharge ,sometimes need to ask for the circuit diagram, As a reference design;

SPF for 2-4 times / sec ,spec 360WV, 400WV, 450WV, Apply to rising voltage circuit closed loop

CDF for  $\geq 5$  times/sec, Highest 11 times / sec, spec 360WV、450WV, 500WV Apply to rising voltage circuit closed loop, Can immediately discharge or completely clean discharge, Special requirements, pulse width is more than 0.3ms, the size of the pulse current can be correspondingly adjusted automatically

charge and discharge projects:

A DC voltage charging and AC voltage charging and Discharge for the flash tube type high pressure xenon lamp