



LGR系列

长寿命

高纹波

纹波
负荷

RoHS 指令
适应品

- 保证 105℃5000 小时产品。
- LHA系列的高纹波化品
- 适用于线路板制板设备, 回流焊工艺设备, 波峰焊工艺设备, 微型数控加工设备
 配电智能化开关, 电能质量产品及无功补偿设备以及相关的控制设备

◆规格表

项目	特性	
工作温度范围	-25~+105℃	
额定电压范围	6.3~550 _{VDC}	
静电容量容许差	± 20% (M) 20℃/120HZ	
漏电流	I=0.02CV 或者 5mA 中任意一个较小值 I:漏电流 (μA)、C:静电容量 (μF)、额定电压 (VDC) 20℃、5分钟值	
损失角正切值 (tanδ)	≤0.15 20℃/120HZ	
温度特性	静电容量变化率 C (-25℃) / C (+20℃) ≥0.7 20℃/120HZ	
绝缘电阻	全部端子和容器套上的绝缘套且安装的固定带之间用 DC500V 的绝缘电阻测定仪测出的值 ≥100MΩ	
绝缘耐压	全部端子和容器套的绝缘套且安装的固定带之间施加 AC2000V 的电压 1 分钟未出现异常。	
耐久性	在 105℃ 环境下, 不超过额定电压的范围下叠加额定纹波电流, 连续加载额定电压 5000 小时后, 待温度恢复到 20℃ 进行测量时, 应满足以下要求。	
	静电容量变化率	≤初始值的 ±20%
	损失角正切值	≤初始规格值的 200%
	漏电流	≤初始规格值
高温无负荷特性	在 105℃ 环境下, 无负荷放置 500 小时后待温度恢复到 20℃, 进行试验前处理 (JIS C 5101-4 4.1 项) 后进行测量时, 应满足以下要求	
	静电容量变化率	≤初始值的 ±20%
	损失角正切值	≤初始规格值的 200%
	漏电流	≤初始规格值

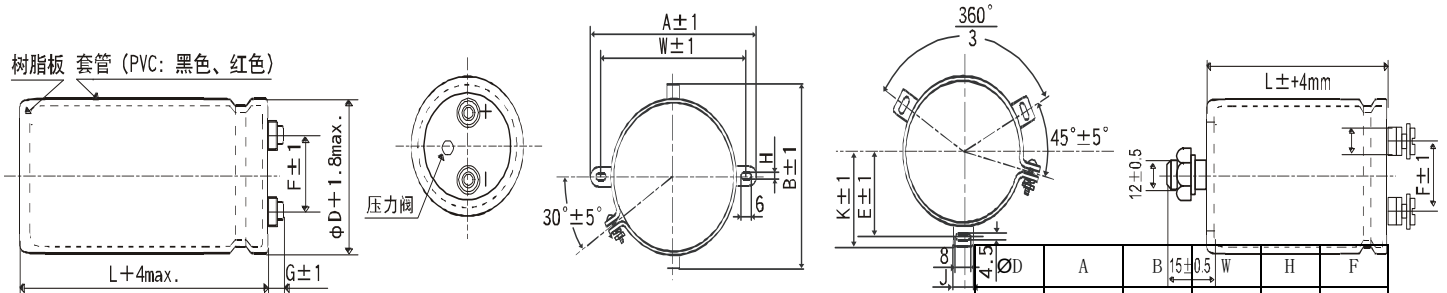
◆尺寸图 [mm]

●端子代码: M5

●绑带代码: B

●绑带代码: C

●无绑带代码: N



035~ 063.5: G=6

076.2~ 089: G=5

端子螺丝规格

~ 089 +字六角长螺丝 M5*0.8*10 M6*1.0*10 Ø100 +字圆型小螺丝 M8*1.25*16

螺丝拧紧最大容许转矩 3.23N.m 弹簧圈、平垫圈, 螺丝拧紧最大容许转矩 6.31N.m

	A	B	W	H	F
35	58.0	44.0	48.0	3.5	12.7
50	78.0	64.0	68.0	4.5	22.4
63.5	90.0	76.0	80.0	4.5	28.0
76.2	104.5	90.0	93.5	4.5	31.5

◆产品型号体系

123 456 78 9 10 11 12 13 14 15 16
 LGR □□□ M5 □ □□□ M □□□□

尺寸代码
 容许差代码
 容量代码 (例 6800μF→682, 39000μF→393)
 绑带代码 (N,B,C)
 端子代码
 电压代码 (例 350V→351, 400V→401)
 系列代码

ØD	E	K	F	J
50	32.5	37.0	14.0	22.4
63.5	38.1	43.5	28.0	14.0
76.2	44.5	50.0	31.5	14.0
89	50.8	56.5	31.5	16.0
100	56.5	63.4	41.5	18.0



产品型号代码的详细介绍请参考(产品型号的表示法(螺丝端子型))

标准品一览表

工作电压 [V]	额定容量 [μ F]	外壳尺寸 [mm]	等效串联电阻值 100Hz, 20 $^{\circ}$ C [m Ω]	额定纹波电流 (Ams/95 $^{\circ}$ C, 100Hz)	产品型号	工作电压 [V]	额定容量 [μ F]	外壳尺寸 [mm]	等效串联电阻值 100Hz, 20 $^{\circ}$ C [m Ω]	额定纹波电流 (Ams/95 $^{\circ}$ C, 100Hz)	产品型号
6.3v	27000	35*40	46.9	4.7	LGR6R3M5B273MA40	6.3v	1600000	89*141	2.4	56.1	LGR6R3M6C165MFE1
	55000	35*55	26.5	6.9	LGR6R3M5B553MA55		1600000	76*192	2.6	55.9	LGR6R3M6C165MEK1
	66000	35*65	18.8	8.9	LGR6R3M5B663MA65		1700000	89*146	2.4	57.0	LGR6R3M6C175MFE6
	87000	35*80	14.7	10.7	LGR6R3M5B873MA80		1800000	76*217	2.4	58.6	LGR6R3M6C185MEN7
	96000	35*55	18.8	9.6	LGR6R3M5B963MA55		2300000	89*192	2.4	61.7	LGR6R3M6C235MFK1
	110000	35*90	12.8	12.1	LGR6R3M5B114MA90		2600000	89*217	2.4	64.4	LGR6R3M6C265MFN7
	120000	35*65	14.3	11.8	LGR6R3M5B124MA65	8sv	22000	35*40	46.9	4.7	LGR010M5B223MA40
	120000	50*55	14.2	12.0	LGR6R3M5B124MC55		39000	35*55	26.5	6.9	LGR010M5B393MA55
	130000	35*106	11.0	13.7	LGR6R3M5B134MAA6		52000	35*65	20.1	8.6	LGR010M5B523MA65
	140000	50*65	9.9	15.5	LGR6R3M5B144MC65		70000	35*80	15.5	10.5	LGR010M5B703MA80
	150000	35*116	9.8	15.2	LGR6R3M5B154MAB6		71000	35*55	18.8	9.6	LGR010M5B713MA55
	160000	35*78	11.0	14.3	LGR6R3M5B164MA78		87000	35*90	12.8	12.1	LGR010M5B873MA90
	170000	35*131	8.9	16.5	LGR6R3M5B174MAD1		95000	35*65	14.3	11.8	LGR010M5B953MA65
	190000	35*141	8.3	17.8	LGR6R3M5B194MAE1		100000	35*106	11.0	13.7	LGR010M5B104MAA6
	190000	35*90	9.1	16.6	LGR6R3M5B194MA90		100000	50*55	17.6	10.7	LGR010M5B104MC50
	200000	50*80	7.8	18.4	LGR6R3M5B204MC80		120000	35*116	9.8	15.2	LGR010M5B124MAB6
	230000	35*106	7.9	18.7	LGR6R3M5B234MAA6		130000	35*80	11.0	14.3	LGR010M5B134MA80
	250000	50*90	6.5	21.4	LGR6R3M5B254MC90		130000	50*65	13.4	13.3	LGR010M5B134MC65
	250000	65*65	6.9	21.2	LGR6R3M6C254MD65		140000	35*131	41.9	16.5	LGR010M5B144MAD1
	270000	35*116	7.0	20.6	LGR6R3M5B274MAB6		160000	35*141	8.3	17.8	LGR010M5B164MAE1
300000	50*106	5.6	24.1	LGR6R3M5B304MCA6	160000		35*90	9.1	16.6	LGR010M5B164MA90	
8sv	310000	35*131	6.4	22.4	LGR6R3M5B314MAD1		160000	50*80	10.5	16.0	LGR010M5B164MC80
	340000	65*80	5.3	25.8	LGR6R3M6C344MD80		190000	35*106	7.9	18.7	LGR010M5B194MAA6
	350000	35*141	6.0	24.0	LGR6R3M5B354MAE1		200000	50*90	8.7	18.5	LGR010M5B204MC90
	360000	50*116	5.0	26.6	LGR6R3M5B364MCB6		200000	65*65	8.8	18.9	LGR010M6C204MD65
	410000	50*131	4.5	28.8	LGR6R3M5B414MCD1		220000	35*116	7.0	20.6	LGR010M5B224MAB6
	420000	65*90	4.3	29.9	LGR6R3M6C424MD90	240000	50*106	7.5	20.8	LGR010M5B244MCA6	
	450000	50*141	4.2	30.9	LGR6R3M5B454MCE1	250000	35*131	6.4	22.4	LGR010M5B254MAD1	
	500000	76*80	4.1	32.9	LGR6R3M6C504ME80	270000	65*80	6.7	22.9	LGR010M6C274MD80	
	510000	65*106	3.8	33.4	LGR6R3M6C514MDA6	280000	35*141	6.0	24.0	LGR010M5B284MAE1	
	580000	65*116	3.4	36.8	LGR6R3M6C584MDB6	280000	50*116	6.7	22.9	LGR010M5B284MCB6	
	620000	76*90	3.3	32.8	LGR6R3M6C624ME90	320000	50*131	6.1	24.8	LGR010M5B324MCD1	
	680000	65*131	3.1	40.0	LGR6R3M6C684MDD1	340000	65*90	5.5	26.5	LGR010M6C344MD90	
	740000	76*106	2.9	42.5	LGR6R3M6C744MEA6	360000	50*141	5.7	26.5	LGR010M5B364MCE1	
	760000	65*141	2.8	42.9	LGR6R3M6C764MDE1	400000	76*80	4.1	32.9	LGR010M6C404ME80	
	880000	76*116	2.6	46.7	LGR6R3M6C884MEB6	410000	65*106	4.8	29.6	LGR010M6C414MDA6	
	980000	76*131	2.4	50.6	LGR6R3M6C984MED1	480000	65*116	4.3	32.6	LGR010M6C484MDB6	
	1100000	76*141	2.4	51.3	LGR6R3M6C115MEE1	500000	76*90	3.3	38.2	LGR010M6C504ME90	
	1100000	89*106	3.0	46.4	LGR6R3M6C115MFA6	550000	65*131	3.9	35.3	LGR010M6C554MDD1	
1100000	89*116	2.6	51.0	LGR6R3M6C115MFB6	600000	76*106	2.9	42.5	LGR010M6C604MEA6		
1200000	76*146	2.4	52.0	LGR6R3M6C125MEE6	610000	65*141	3.6	37.9	LGR010M6C614MDE1		
1400000	89*131	2.4	55.4	LGR6R3M6C145MFD1	700000	76*116	2.6	46.7	LGR010M6C704MEB6		

规格书中记载的内容有可能未经更新(例如尺寸, 特殊的容量, 特殊的电压, 特殊的要求)。贵司在购买、使用时请咨询本公司商务工程师, 以便给您更新更准确的技术信息。



10v	800000	76*131	2.4	50.6	LGR010M6C804MED1	16v	800000	89*131	2.5	54.4	LGR016M6C804MFD1	
	830000	89*106	2.9	47.3	LGR010M6C834MFA6		870000	89*141	2.4	56.7	LGR016M6C874MF1	
	870000	76*141	2.3	53.0	LGR010M6C874MEE1		900000	76*192	2.6	54.1	LGR016M6C904MEK2	
	930000	76*146	2.3	53.3	LGR010M6C934MEE6		920000	89*146	2.4	57.3	LGR016M6C924MFE6	
	970000	89*116	2.8	49.6	LGR010M6C974MFB6		20sv	1000000	76*217	2.6	57.1	LGR016M6C105MEN7
	1100000	89*131	2.5	54.5	LGR010M6C115MFD1			1300000	89*192	2.3	63.1	LGR016M6C135MFK2
	1200000	89*141	2.2	59.0	LGR010M6C125MFE1			1500000	89*217	2.3	66.4	LGR016M6C155MNF7
	1300000	89*146	2.1	60.8	LGR010M6C135MFE6			25v 30sv	11000	35*40	37.1	5.3
	1300000	76*192	2.1	60.1	LGR010M6C135MEK2		18000		35*55	23.6	7.4	LGR025M5B183MA55
	1500000	76*217	2.1	63.7	LGR010M6C155MEN7		26000		35*65	16.9	9.4	LGR025M5B263MA65
	1700000	89*192	1.8	73.4	LGR010M6C175MFK2		33000		35*55	21.8	8.9	LGR025M5B333MA55
	2000000	89*217	1.5	80.5	LGR010M6C205MNF7		34000		35*65	17.1	10.0	LGR025M5B343MA65
12sv	15000	35*40	46.9	4.7	LGR016M5B153MA40	39000	35*65		19.4	10.2	LGR025M5B393MA65	
	27000	35*55	26.5	6.9	LGR016M5B273MA55	43000	35*90		17.7	10.3	LGR025M5B433MA90	
	36000	35*65	20.1	8.6	LGR016M5B363MA65	47000	50*55		21.8	9.7	LGR025M5B473MC55	
	48000	35*80	15.5	10.5	LGR016M5B483MA80	51000	35*106		16.3	11.3	LGR025M5B513MAA6	
	49000	35*55	18.8	9.6	LGR016M5B493MA50	53000	50*65		16.5	12.0	LGR025M5B533MC65	
	61000	35*90	12.8	12.1	LGR016M5B613MA90	54000	35*80		15.2	12.2	LGR025M5B543MA80	
	66000	35*65	15.3	11.4	LGR016M5B663MA65	60000	35*116		15.4	12.1	LGR025M5B603MAB6	
	71000	50*55	17.6	10.7	LGR016M5B713MC55	69000	35*131		14.4	13.0	LGR025M5B693MAD1	
	73000	35*106	11.0	13.7	LGR016M5B733MAA6	69000	50*80		12.2	14.8	LGR025M5B693MC80	
	85000	35*116	9.8	15.2	LGR016M5B853MAB6	70000	35*90		12.8	14.1	LGR025M5B703MA90	
	88000	35*80	12.5	13.5	LGR016M5B883MA80	77000	35*141		13.4	14.0	LGR025M5B773MAE1	
	90000	50*65	13.4	13.3	LGR016M5B903MC65	82000	65*65		9.5	18.1	LGR025M6C823MD65	
97000	35*131	8.9	16.5	LGR016M5B973MAD1	86000	35*106	11.2		15.7	LGR025M5B863MAA6		
110000	35*141	8.3	17.8	LGR016M5B114MAE1	89000	50*90	9.8		17.4	LGR025M5B893MC90		
110000	35*90	10.9	15.2	LGR016M5B114MA90	100000	35*116	10.2		17.1	LGR025M5B104MAB6		
110000	50*80	10.5	16.0	LGR016M5B114MC80	110000	50*106	8.3		19.7	LGR025M5B114MCA6		
130000	35*106	9.7	16.9	LGR016M5B134MAA6	110000	65*80	7.6		21.5	LGR025M6C114MD80		
140000	50*90	8.7	18.5	LGR016M5B144MC90	120000	35*141	9.6		18.4	LGR025M5B124MAE1		
140000	65*65	8.8	18.9	LGR016M6C144MD65	130000	35*116	9.1		19.5	LGR025M5B134MAB6		
150000	35*116	8.8	18.5	LGR016M5B154MAB6	130000	50*116	7.3		21.9	LGR025M5B134MCB6		
170000	50*106	7.5	20.8	LGR016M5B174MCA6	150000	50*131	6.6		23.9	LGR025M5B154MCD1		
16v	180000	35*131	8.2	19.9	LGR016M5B184MAD1	150000	65*90		6.4	24.6	LGR025M6C154MD90	
	190000	65*80	6.7	22.9	LGR016M6C194MD80	170000	50*141		6.1	25.7	LGR025M5B174MCE1	
	200000	35*141	7.8	21.1	LGR016M5B204MAE1	170000	76*80		5.0	29.7	LGR025M6C174ME80	
	200000	50*116	6.7	22.9	LGR016M5B204MCB6	180000	65*106		5.8	27.0	LGR025M6C184MDA6	
	220000	50*131	6.1	24.8	LGR016M5B224MCD1	210000	65*116		5.2	29.5	LGR025M6C214MDB6	
	230000	65*90	5.5	26.5	LGR016M6C234MD90	220000	76*90		4.3	31.1	LGR025M6C224ME90	
	250000	50*141	5.7	26.5	LGR016M5B254MCE1	250000	65*131		5.0	33.6	LGR025M6C254MDD1	
	280000	65*106	5.0	29.2	LGR016M6C284MDA6	270000	76*106		3.9	36.9	LGR025M6C274MEA6	
	280000	76*80	4.2	32.4	LGR016M6C284ME80	280000	65*141		4.6	33.7	LGR025M6C284MDE1	
	320000	65*116	4.6	31.44	LGR016M6C324MDB6	320000	76*116		3.5	40.0	LGR025M6C324MEB6	
	350000	76*90	3.6	36.8	LGR016M6C354ME90	370000	76*131	3.3	42.7	LGR025M6C374MED1		
	370000	65*131	4.4	33.4	LGR016M6C374MDD1	390000	89*106	3.8	40.9	LGR025M6C394MFA6		
420000	65*141	4.2	35.2	LGR016M6C424MDE1	420000	76*141	3.2	44.9	LGR025M6C424MEB1			
420000	76*106	3.3	40.2	LGR016M6C424MEA6	440000	76*146	3.1	46.5	LGR025M6C444MEE6			
490000	76*116	3.1	42.8	LGR016M6C494MEB6	460000	89*116	3.5	44.4	LGR025M6C464MFB6			
550000	76*131	2.8	46.2	LGR016M6C554MED1	530000	89*131	3.2	47.4	LGR025M6C534MFD1			
600000	89*106	2.9	47.3	LGR016M6C604MFA6	600000	89*141	3.1	50.2	LGR025M6C604MFE1			
610000	76*141	2.8	48.1	LGR016M6C614MEE1	610000	76*192	3.1	50.2	LGR025M6C614MEK2			
640000	76*146	2.8	48.8	LGR016M6C644MEE6	630000	89*146	2.9	51.8	LGR025M6C634MFE6			
700000	89*116	2.8	49.7	LGR016M6C704MFB6	710000	76*217	3.0	52.8	LGR025M6C714MEN7			

规格书中记载的内容有可能未经更新(例如尺寸, 特殊的容量, 特殊的电压, 特殊的要求)。贵司在购买、使用时请咨询本公司商务工程师, 以便给您更新更准确的技术信息。



25v	870000	89*192	3.0	55.6	LGR025M6C874MFK2		11000	35*65	21.8	8.3	LGR050M5B113MA65
	30sv	1000000	89*217	2.9	58.3		LGR025M6C105MFN7	14000	35*80	20.9	9.0
35v	6600	35*40	41.7	5.0	LGR035M5B662MA40	50v 65sv	14000	35*55	22.8	8.7	LGR050M5B143MA55
	11000	35*55	26.7	6.9	LGR035M5B113MA55		16000	35*65	20.2	10.0	LGR050M5B163MA65
	16000	35*65	19.5	8.7	LGR035M5B163MA65		17000	50*55	25.3	9.0	LGR050M5B173MC55
	20000	35*55	22.3	8.8	LGR035M5B203MA55		18000	35*90	17.8	10.3	LGR050M5B183MA90
	21000	35*80	19.4	9.3	LGR035M5B213MA80		21000	35*106	17.3	11.0	LGR050M5B213MAA6
	24000	35*65	19.2	10.2	LGR035M5B243MA65		22000	50*65	20.8	10.7	LGR050M5B223MC65
	26000	35*90	19.7	9.8	LGR035M5B263MA90		23000	35*80	15.6	12.1	LGR050M5B233MA80
	26000	50*55	24.5	9.1	LGR035M5B263MC55		25000	35*116	16.8	11.6	LGR050M5B253MAB6
	32000	35*106	18.7	10.5	LGR035M5B323MAA6		29000	35*131	15.1	12.7	LGR050M5B293MAD1
	33000	50*65	20.1	10.8	LGR035M5B333MC65		29000	50*80	16.3	12.8	LGR050M5B293MC80
	34000	35*80	15.5	12.1	LGR035M5B343MA80		32000	35*141	13.8	13.8	LGR050M5B323MAE1
	37000	35*116	16.7	11.6	LGR035M5B373MAB6		34000	65*65	15.1	14.4	LGR050M6C343MD65
	42000	35*131	14.8	12.9	LGR035M5B423MAD1		36000	35*106	12.0	15.2	LGR050M5B363MAA6
	43000	35*90	13.2	13.8	LGR035M5B433MA90		37000	50*90	13.6	14.8	LGR050M5B373MC90
	43000	50*80	15.9	13.0	LGR035M5B433MC80		42000	35*116	10.8	16.6	LGR050M5B423MAB6
	48000	35*141	13.5	14.0	LGR035M5B483MAE1		46000	50*106	11.9	16.5	LGR050M5B463MCA6
	51000	65*65	14.8	14.5	LGR035M6C513MD65		48000	65*80	12.0	17.1	LGR050M6C483MD80
	53000	35*106	11.8	15.3	LGR035M5B533MAA6		49000	35*131	9.8	18.1	LGR050M5B493MAD1
	55000	50*90	13.2	15.0	LGR035M5B553MC90		54000	50*116	10.8	18.0	LGR050M5B543MCB6
	62000	35*116	10.6	16.8	LGR035M5B623MAB6		55000	35*141	9.5	19.1	LGR050M5B553MAE1
	67000	50*106	11.6	16.7	LGR035M5B673MCA6		62000	50*131	10.0	19.4	LGR050M5B623MCD1
	70000	65*80	11.5	17.2	LGR035M6C713MD80		62000	65*90	10.3	19.4	LGR050M6C623MD90
	71000	65*80	11.5	17.5	LGR035M6C713MD80		70000	50*141	9.5	20.5	LGR050M5B703MCE1
	72000	35*131	9.8	18.2	LGR035M5B723MAD1		72000	76*80	9.1	22.0	LGR050M6C723ME80
	80000	50*116	10.5	18.2	LGR035M5B803MCB6		75000	65*106	8.9	21.8	LGR050M6C753MDA6
	82000	35*141	9.4	19.2	LGR035M5B823MAE1		89000	65*116	7.9	24.0	LGR050M6C893MDB6
	91000	65*90	9.4	20.3	LGR035M6C913MD90		92000	76*90	7.7	25.1	LGR050M6C923ME90
	92000	50*131	9.8	19.5	LGR035M5B923MCD1		100000	65*131	7.2	26.0	LGR050M6C104MDD1
	100000	50*141	9.4	20.7	LGR035M5B104MCE1		110000	76*106	6.9	27.6	LGR050M6C114MEA6
	110000	65*106	8.2	22.6	LGR035M6C114MDA6		120000	65*141	6.7	27.9	LGR050M6C124MDE1
	110000	76*80	6.9	25.3	LGR035M6C114ME80		130000	76*116	6.1	30.4	LGR050M6C134MEB6
	130000	65*116	7.4	24.8	LGR035M6C134MDB6		150000	76*131	5.9	32.0	LGR050M6C154MED1
140000	76*90	5.7	29.1	LGR035M6C144ME90	150000	89*106	6.4	31.7	LGR050M6C154MFA6		
150000	65*131	6.8	26.8	LGR035M6C154MDD1	170000	76*141	5.6	33.8	LGR050M6C174MEE1		
170000	65*141	6.1	29.2	LGR035M6C174MDE1	180000	76*146	5.4	35.0	LGR050M6C184MEE6		
170000	76*106	5.2	32.0	LGR035M6C174MEA6	180000	89*116	5.7	34.7	LGR050M6C184MFB6		
200000	76*116	4.7	34.8	LGR035M6C204MEB6	200000	89*131	5.4	36.8	LGR050M6C204MFD1		
230000	76*131	4.4	37.2	LGR035M6C234MED1	230000	89*141	5.0	39.0	LGR050M6C234MFE1		
240000	89*106	4.9	36.0	LGR035M6C244MFA6	250000	89*146	5.30	40.0	LGR050M6C254MFE6		
260000	76*141	4.0	39.9	LGR035M6C264MEE1	260000	76*192	5.0	42.0	LGR050M6C264MEK2		
270000	76*146	3.9	41.3	LGR035M6C274MEE6	300000	76*217	4.0	45.0	LGR050M6C304MEN7		
280000	89*116	4.5	39.0	LGR035M6C284MFB6	340000	89*192	4.0	47.0	LGR050M6C344MFK2		
330000	89*131	4.0	42.6	LGR035M6C334MFD1	400000	89*217	4.0	51.0	LGR050M6C404MFN7		
370000	89*141	3.6	46.0	LGR035M6C374MFE1	63v 75sv	3400	35*40	60.6	4.1	LGR063M5B342MA40	
380000	76*192	3.8	45.3	LGR035M6C384MEK2		5800	35*55	39.0	5.7	LGR063M5B582MA55	
390000	89*146	3.5	47.5	LGR035M6C394MFE6		8200	35*65	27.4	7.4	LGR063M5B822MA65	
440000	76*217	3.6	48.1	LGR035M6C444MEN7		11000	35*80	25.2	8.2	LGR063M5B113MA80	
540000	89*192	3.4	52.1	LGR035M6C544MFK2		11000	35*55	27.9	7.9	LGR063M5B113MA55	
630000	89*217	3.3	55.2	LGR035M6C634MFN7		12000	35*65	25.6	8.8	LGR063M5B123MA65	
50v	4500	35*40	47.9	4.7		LGR050M5B452MA40	13000	50*55	28.0	8.5	LGR063M5B133MC55
65sv	7600	35*55	30.9	6.4		LGR050M5B762MA55	14000	35*90	23.7	8.9	LGR063M5B143MA90



63v 75sv	15000	50*65	22.6	10.2	LGR063M5B153MC65	75v 95sv	17000	35*131	22.5	10.4	LGR075M5B173MAD1
	16000	35*106	20.4	10.1	LGR063M5B163MAA6		18000	35*90	26.9	9.7	LGR075M5B183MA90
	17000	35*80	19.5	10.8	LGR063M5B173MA80		19000	35*141	20.4	11.3	LGR075M5B193MAE1
	19000	35*116	18.1	11.2	LGR063M5B193MAB6		19000	65*65	30.0	10.2	LGR075M6C193MD65
	20000	50*80	18.1	12.1	LGR063M5B203MC80		21000	35*106	22.3	11.1	LGR075M5B213MAA6
	22000	35*131	16.4	12.2	LGR063M5B223MAD1		21000	50*90	18.0	12.8	LGR075M5B213MC90
	22000	35*90	16.2	12.5	LGR063M5B223MA90		25000	35*116	19.2	12.5	LGR075M5B253MAB6
	24000	65*65	26.8	10.8	LGR063M6C243MD65		25000	50*106	15.6	14.4	LGR075M5B253MCA6
	25000	35*141	15.1	13.2	LGR063M5B253MAE1		26000	65*80	21.6	12.7	LGR075M6C263MD80
	26000	50*90	15.1	14.0	LGR063M5B263MC90		29000	35*131	16.9	13.8	LGR075M5B293MAD1
	27000	35*106	14.2	14.0	LGR063M5B273MAA6		30000	50*116	13.9	15.8	LGR075M5B303MCB6
	32000	35*116	12.8	15.3	LGR063M5B323MAB6		33000	35*141	15.2	15.1	LGR075M5B333MAE1
	32000	50*106	13.3	15.6	LGR063M5B323MCA6		34000	50*131	12.8	17.1	LGR075M5B343MCD1
	34000	65*80	19.3	13.5	LGR063M6C343MD80		34000	65*90	17.8	14.8	LGR075M6C343MD90
	37000	35*131	11.8	16.5	LGR063M5B373MAD1		39000	50*141	12.0	18.3	LGR075M5B393MCE1
	38000	50*116	12.1	17.0	LGR063M5B383MCB6		40000	76*80	18.0	15.6	LGR075M6C403ME80
	42000	35*141	11.2	17.6	LGR063M5B423MAE1		42000	65*106	15.1	16.7	LGR075M6C423MDB6
	43000	65*90	17.1	15.1	LGR063M6C433MD90		49000	65*116	13.5	18.4	LGR075M6C493MDB6
	44000	50*131	11.3	18.3	LGR063M5B443MCD1		51000	76*90	14.4	18.3	LGR075M6C513ME90
	49000	50*141	10.7	19.4	LGR063M5B493MCE1		57000	65*131	12.0	20.2	LGR075M6C573MDD1
	50000	76*80	14.9	17.2	LGR063M6C503ME80		64000	65*141	11.2	21.5	LGR075M6C643MDE1
	53000	65*106	13.7	17.5	LGR063M6C533MDA6		74000	76*116	11.8	21.9	LGR075M6C743MEB6
	62000	65*116	11.8	19.6	LGR063M6C623MDB6		85000	76*131	10.4	24.1	LGR075M6C853MED1
	65000	76*90	12.1	20.0	LGR063M6C653ME90		85000	89*90	11.8	23.2	LGR075M6C853MF90
	72000	65*131	11.0	21.1	LGR063M6C723MDD1		96000	76*141	9.4	26.2	LGR075M6C963MEE1
	79000	76*106	10.8	22.1	LGR063M6C793MEA6		100000	76*146	8.9	27.2	LGR075M6C104MEE6
	82000	65*141	10.5	22.3	LGR063M6C823MDE1		100000	89*116	10.7	25.3	LGR075M6C104MFB6
	93000	76*116	9.9	23.9	LGR063M6C933MEB6		120000	89*131	9.4	27.8	LGR075M6C124MFD1
	110000	76*131	8.8	26.3	LGR063M6C114MED1		130000	89*141	8.4	30.2	LGR075M6C134MFE1
	110000	89*106	9.9	25.4	LGR063M6C114MFA6		140000	76*192	7.7	32.1	LGR075M6C144MEK2
	120000	76*141	7.9	28.5	LGR063M6C124MEE1		160000	76*146	6.8	35.1	LGR075M6C164MEE6
	130000	76*146	7.5	29.6	LGR063M6C134MEE6		190000	89*192	6.9	36.8	LGR075M6C194MFK2
130000	89*116	9.0	27.6	LGR063M6C134MFB6	220000	89*217	6.2	40.2	LGR075M6C224MFN7		
150000	89*131	7.9	30.3	LGR063M6C154MFD1	1600	35*40	98.4	3.3	LGR100M5B162MA40		
170000	89*141	7.2	32.8	LGR063M6C174MFE1	2500	35*55	60.2	4.6	LGR100M5B252MA55		
180000	76*192	6.5	35.0	LGR063M6C184MEK2	3800	35*65	42.7	5.9	LGR100M5B382MA65		
180000	89*146	6.8	34.0	LGR063M6C184MFE6	4900	35*55	62.0	5.3	LGR100M5B492MA55		
210000	76*217	5.7	38.3	LGR063M6C214MEN7	5100	35*80	38.2	6.7	LGR100M5B512MA85		
250000	89*192	5.8	40.2	LGR063M6C254MFK2	5100	50*55	51.8	6.3	LGR100M5B512MC55		
290000	89*217	5.2	43.9	LGR063M6C294MFN7	5800	35*65	52.8	6.2	LGR100M5B582MA65		
75v 95sv	2700	35*40	76.2	3.7	LGR075M5B272MA40	6300	35*90	33.0	7.6	LGR100M5B632MA90	
	4300	35*55	50.7	5.0	LGR075M5B432MA55	7300	50*65	37.8	7.9	LGR100M5B732MC65	
	6400	35*65	35.0	6.5	LGR075M5B642MA65	7600	35*106	30.7	8.2	LGR100M5B762MAA6	
	8300	35*55	55.6	5.6	LGR075M5B832MA55	8100	35*80	38.0	7.7	LGR100M5B812MA80	
	8600	35*96	34.0	7.1	LGR075M5B862MA96	8900	35*116	29.0	8.8	LGR100M5B892MAB6	
	9800	35*65	47.3	6.5	LGR075M5B982MA65	10000	35*131	28.3	9.3	LGR100M5B103MAD1	
	10000	50*55	34.8	7.7	LGR075M5B103MC55	11000	35*141	27.6	9.7	LGR100M5B113MAE1	
	11000	35*90	31.1	7.8	LGR075M5B113MA90	12000	65*65	33.7	9.6	LGR100M6C123MD65	
	11000	50*65	27.5	9.3	LGR075M5B113MC65	13000	35*106	24.8	10.6	LGR100M5B133MAA6	
	13000	35*106	28.2	8.6	LGR075M5B133MAA6	13000	50*90	22.3	11.5	LGR100M5B133MC90	
	14000	35*90	34.1	8.2	LGR075M5B143MA90	15000	35*116	21.2	11.9	LGR100M5B153MAB6	
	15000	35*116	24.5	9.6	LGR075M5B153MAB6	16000	50*106	19.9	12.8	LGR100M5B163MCA6	
16000	50*80	21.4	11.2	LGR075M5B163MC80	17000	35*131	18.7	13.1	LGR100M5B173MAD1		



100v	17000	65*80	23.4	12.3	LGR100M6C173MD80	160v 200sv	18000	76*106	9.6	23.4	LGR160M6C183MEA6
	19000	50*116	17.7	14.1	LGR100M5B193MCB6		19000	65*141	9.6	23.2	LGR160M6C193MDE1
	20000	35*141	16.8	14.3	LGR100M5B203MAE1		21000	76*116	8.2	26.2	LGR160M6C213MEB6
	22000	50*90	15.6	15.5	LGR100M5B223MC90		25000	76*131	7.3	28.9	LGR160M6C253MED1
	25000	50*131	14.9	16.4	LGR100M5B253MCD1		28000	76*141	6.5	31.4	LGR160M6C283MEE1
	27000	65*106	16.5	16.0	LGR100M6C273MDA6		29000	76*146	6.2	32.6	LGR160M6C293MEE6
	32000	65*116	14.7	17.6	LGR100M6C323MDB6		34000	89*131	6.9	32.4	LGR160M6C343MFD1
	33000	76*90	16.4	17.2	LGR100M6C333ME90		38000	89*141	6.2	35.1	LGR160M6C383MFE1
	36000	65*131	13.4	19.1	LGR100M6C363MDD1		40000	89*146	5.9	36.5	LGR160M6C403MFE6
	40000	76*106	14.4	19.1	LGR100M6C403MEA6		41000	76*192	5.1	39.8	LGR160M6C413MEK2
	41000	65*141	12.5	20.4	LGR100M6C413MDE1		47000	76*217	4.3	44.0	LGR160M6C473MEN7
	47000	76*116	13.0	20.9	LGR100M6C473MEB6		56000	89*192	4.9	44.3	LGR160M6C563MFK2
	54000	76*131	12.0	22.5	LGR100M6C543MED1		65000	89*217	4.2	48.8	LGR160M6C653MFn7
	55000	89*106	13.4	21.8	LGR100M6C553MFA6		540	35*40	206.0	2.3	LGR200M5B540MA40
	62000	76*141	11.2	23.9	LGR100M6C623MEE1		770	35*55	140.0	3.0	LGR200M5B770MA55
	65000	76*146	11.1	24.4	LGR100M6C653MEE6		970	35*65	101.0	3.9	LGR200M5B970MA65
	74000	89*116	12.1	23.8	LGR100M6C743MFB6		1400	35*80	78.5	4.6	LGR200M5B142MA80
	84000	89*131	10.9	25.9	LGR100M6C843MFD1		1500	35*55	79.1	4.7	LGR200M5B152MA55
	89000	89*141	10.2	27.5	LGR100M6C893MFE1		1600	50*55	82.0	5.0	LGR200M5B162MC55
	94000	76*192	9.2	29.4	LGR100M6C943MEK2		1700	35*90	63.9	5.4	LGR200M5B172MA90
110000	76*217	8.2	32.1	LGR100M6C114MEN7	2100	35*106	51.7	6.3	LGR200M5B212MAA6		
120000	89*192	8.3	33.7	LGR100M6C124MFK2	2200	50*65	61.0	6.2	LGR200M5B222MC65		
140000	89*217	7.3	36.8	LGR100M6C144MFn7	2400	35*80	48.4	6.9	LGR200M5B242MA80		
125sv	750	35*40	150.0	2.6	LGR160M5B750MA40	2500	35*116	43.2	7.2	LGR200M5B252MA80	
	1200	35*55	93.0	3.7	LGR160M5B122MA55	2900	35*131	37.8	8.0	LGR200M5B292MAD1	
	1500	35*65	70.5	4.6	LGR160M5B152MA65	3100	50*80	46.1	7.6	LGR200M5B312MC80	
	2100	35*80	58.5	5.4	LGR160M5B212MA80	3300	35*141	33.4	8.9	LGR200M5B332MAE1	
	2300	35*55	62.0	5.3	LGR160M5B232MA55	3500	65*65	42.2	8.6	LGR200M6C352MD65	
	2400	50*55	70.0	5.4	LGR160M5B242MC55	3800	35*106	31.3	9.4	LGR200M5B382MAA6	
	2700	35*65	52.8	6.2	LGR160M5B272MA65	4000	50*90	36.2	9.0	LGR200M5B402MC90	
	3300	35*106	42.9	7.0	LGR160M5B332MAA6	4500	35*116	26.8	10.6	LGR200M5B452MAB6	
	3500	50*55	46.5	7.1	LGR160M5B352MC55	4900	50*106	28.5	10.6	LGR200M5B492MCA6	
	3800	35*65	38.0	7.7	LGR160M5B382MA65	5200	35*131	23.5	11.7	LGR200M5B522MAD1	
	3900	35*116	37.7	7.7	LGR160M5B392MAB6	5800	50*116	24.4	12.0	LGR200M5B582MCB6	
	4500	35*131	34.7	8.4	LGR160M5B452MAD1	5900	35*141	21.0	12.8	LGR200M5B592MAE1	
	4900	35*90	29.9	9.2	LGR160M5B492MA90	6200	65*90	22.3	13.2	LGR200M6C622MD90	
	4900	50*80	33.5	8.9	LGR160M5B492MC80	6700	50*131	21.7	13.2	LGR200M5B672MCD1	
	5100	35*141	32.2	9.0	LGR160M5B512MAE1	7600	50*141	19.6	14.3	LGR200M5B762MCE1	
	5500	65*65	30.1	10.2	LGR160M6C552MD65	9000	65*116	17.3	16.2	LGR200M6C902MDB6	
	6000	35*106	24.8	10.6	LGR160M5B602MAA6	9800	76*90	23.7	14.3	LGR200M6C982ME90	
	6300	50*90	26.4	10.6	LGR160M5B623MC90	10000	65*131	15.8	17.6	LGR200M6C103MDD1	
	7100	35*116	21.2	11.9	LGR160M5B712MAB6	12000	76*106	19.7	16.3	LGR200M6C123MEA6	
	7700	50*106	21.9	12.2	LGR160M5B772MCA6	14000	76*116	16.9	18.3	LGR200M6C143MEB6	
8200	35*131	18.7	13.1	LGR160M5B822MAD1	15000	89*106	17.1	19.3	LGR200M6C153MFA6		
9100	50*116	18.8	13.6	LGR160M5B912MCB6	16000	76*131	14.8	20.2	LGR200M6C163MED1		
9300	35*141	16.8	14.3	LGR160M5B932MAE1	18000	76*141	13.3	22.0	LGR200M6C183MEE1		
9900	65*90	17.0	15.1	LGR160M6C992MD90	19000	76*146	15.3	20.7	LGR200M6C193MEE6		
10000	50*131	16.6	15.0	LGR160M5B103MCD1	20000	89*116	12.7	23.3	LGR200M6C203MFB6		
11000	76*80	14.7	17.3	LGR160M6C113ME80	21000	89*131	13.4	23.3	LGR200M6C213MFD1		
12000	50*141	14.9	16.4	LGR160M5B123MCE1	24000	89*141	12.0	25.3	LGR200M6C243MFE1		
14000	65*116	11.9	19.6	LGR160M6C143MDB6	25000	89*146	11.5	26.3	LGR200M6C253MFE6		
15000	76*90	11.5	20.5	LGR160M6C153ME90	26000	76*192	11.7	26.4	LGR200M6C263MEK2		
16000	65*131	10.7	21.3	LGR160M6C163MDD1	31000	76*217	9.6	29.6	LGR200M6C313MEN7		



200v	35000	89*192	9.3	32.1	LGR200M6C353MFK2	300v	3000	35*131	42.5	8.7	LGR300M5B302MAD1		
	250sv	40000	89*217	7.9	35.5		LGR200M6C403MFN7	3400	35*141	37.9	9.5	LGR300M5B342MAE1	
250V	380	35*40	260	2.0	LGR250M5B380MA40	350sv	3500	50*116	38.9	9.5	LGR300M5B352MCE6		
	680	35*55	156	2.9	LGR250M5B680MA55		3700	65*90	38.1	10.1	LGR300M6C372MD90		
	830	35*65	119	3.5	LGR250M5B830MA65		4000	50*131	34.0	10.5	LGR300M5B402MCD1		
	1100	35*80	87.5	4.4	LGR250M5B112MA80		4100	76*80	42.8	10.0	LGR300M6C412ME80		
	1200	50*55	94.6	4.6	LGR250M5B122MC55		4500	65*106	29.9	11.9	LGR300M6C452MDA6		
	1300	35*65	82.8	4.9	LGR250M5B132MA65		5200	76*90	34.0	11.9	LGR300M6C522ME90		
	1400	35*90	69.5	5.2	LGR250M5B142MA90		5300	65*116	25.5	13.4	LGR300M6C532MDB6		
	1700	50*65	65.7	6.0	LGR250M5B172MC65		6100	65*131	22.2	14.8	LGR300M6C612MDD1		
	1800	35*80	61.1	6.1	LGR250M5B182MA80		6400	76*106	26.2	14.2	LGR300M6C642MEA6		
	2000	35*116	51.5	6.6	LGR250M5B202MAB6		6900	65*141	19.8	16.2	LGR300M6C692MDE1		
	2300	35*146	44.1	7.4	LGR250M5B232MAE6		7500	76*116	23.6	15.5	LGR300M6C752MEB6		
	2400	50*80	46.2	7.6	LGR250M5B242MC80		8700	76*131	20.5	17.2	LGR300M6C872MED1		
	2600	35*141	38.4	8.3	LGR250M5B262MAE1		8900	89*106	21.0	17.4	LGR300M6C892MFA6		
	2800	35*106	40.4	8.3	LGR250M5B282MAA6		9800	89*141	18.0	18.9	LGR300M6C982MFE1		
	3100	50*90	38.1	8.8	LGR250M5B312MC90		10000	76*146	17.0	19.7	LGR300M6C103MEE6		
	3300	35*116	34.7	9.3	LGR250M5B332MAB6		12000	89*131	16.0	21.3	LGR300M6C123MFD1		
	3700	65*80	32.0	10.5	LGR250M6C372MD80		13000	89*141	14.3	23.2	LGR300M6C133MFE1		
	3800	35*131	30.5	10.3	LGR250M5B382MAD1		14000	89*146	13.5	24.2	LGR300M6C143MFE6		
	4300	35*141	27.3	11.2	LGR250M5B432MAE1		15000	76*192	13.2	24.9	LGR300M6C153MEK2		
	4500	50*116	26.9	11.4	LGR250M5B452MCE6		17000	76*217	10.8	27.9	LGR300M6C173MEN7		
	4700	65*90	25.0	12.4	LGR250M6C472MD90		19000	89*192	11.0	29.5	LGR300M6C193MFK2		
	300SV	5200	50*131	23.6	12.6		LGR250M5B522MCD1	22000	89*217	9.3	32.6	LGR300M6C223MFN7	
		5600	76*80	27.6	12.6		LGR250M6C562ME80	350v	200	35*40	605.0	1.3	LGR350M5B200MA40
		5800	65*106	20.7	14.3		LGR250M6C582MDA6		320	35*55	379.0	1.8	LGR350M5B320MA55
		5900	50*141	21.0	13.8		LGR250M5B592MCE1		470	35*65	253.0	2.4	LGR350M5B470MA65
		6900	65*116	17.7	16.1		LGR250M6C692MDB6		630	35*80	190.0	3.0	LGR350M5B630MA80
		7200	76*90	21.6	15.0		LGR250M6C722ME90		720	35*55	177.30	3.1	LGR350M5B720MA55
		7900	65*131	15.5	17.7		LGR250M6C792MDD1		770	35*65	162.0	3.5	LGR350M5B770MA65
		8800	76*106	17.6	17.3		LGR250M6C882MEA6		790	35*90	153.0	3.5	LGR350M5B790MA90
		9000	65*141	13.8	19.4		LGR250M6C902MDE1		950	35*106	127.0	4.0	LGR350M5B950MAA6
		10000	76*116	16.3	18.6		LGR250M6C103MEB6		970	50*65	132.0	4.2	LGR350M5B970MC65
		11000	89*106	19.5	18.1		LGR250M6C113MFA6		990	35*90	125.0	4.3	LGR350M5B990MA90
	12000	76*131	14.3	20.6	LGR250M6C123MED1	1100	35*116		110.0	4.5	LGR350M5B112MAB6		
	13000	89*116	17.2	19.9	LGR250M6C133MFB6	1300	35*131		96.3	5.0	LGR350M5B132MAD1		
	14000	76*141	12.0	23.2	LGR250M6C143MEE1	1400	35*141		85.9	5.5	LGR350M5B142MAE1		
	15000	76*146	11.5	23.9	LGR250M6C153MEE6	1500	65*65		86.9	6.0	LGR350M6C152MD65		
	17000	89*141	13.2	24.2	LGR250M6C173MFE1	1600	35*106		79.9	5.9	LGR350M5B162MAA6		
	18000	89*146	12.8	24.8	LGR250M6C183MFE6	1800	35*116		67.8	6.6	LGR350M5B182MAB6		
	21000	76*192	9.6	30.9	LGR250M6C213MEK2	2000	50*106		65.1	7.0	LGR350M5B202MCA6		
	24000	76*217	7.0	34.6	LGR250M6C243MEN7	2100	35*131		59.1	7.4	LGR350M5B212MAD1		
	25000	89*192	10.5	30.0	LGR250M6C253MFK2	2200	65*80		61.0	7.6	LGR350M6C222MD80		
	29000	89*217	9.2	33.0	LGR250M6C293MFN7	2300	50*116		55.4	8.0	LGR350M5B232MCE6		
300v	1600	35*116	77.4	5.4	LGR300M5B162MAB6	2400	35*141	52.4	8.1	LGR350M5B242MAE1			
	1800	35*131	65.7	6.1	LGR300M5B182MAD1	2700	50*131	48.3	8.8	LGR350M5B272MCD1			
	1900	50*80	71.1	6.1	LGR300M5B192MC80	2900	76*80	54.0	9.0	LGR350M6C292ME80			
	2000	35*141	60.3	6.6	LGR300M5B202MAE1	3100	50*141	42.8	9.7	LGR350M5B312MCE1			
	2200	35*106	56.7	7.0	LGR300M5B242MAA6	3300	65*106	39.9	10.3	LGR350M6C332MDA6			
	350sv	2400	50*90	55.5	7.3	LGR300M5B242MC90	3700	76*90	41.7	10.8	LGR350M6C372ME90		
		2600	35*116	48.5	7.9	LGR300M5B262MAB6	3900	65*116	34.0	11.6	LGR350M6C392MDB6		
		2900	50*106	45.7	8.4	LGR300M5B292MCA6	4500	65*131	29.6	12.8	LGR350M6C452MDD1		
	2900	65*80	46.5	8.7	LGR300M6C292MD80	4600	76*106	34.7	12.3	LGR350M6C462MEA6			



350v	5100	65*141	26.2	14.1	LGR350M6C512MDE1	400v	8300	89*146	20.1	19.8	LGR400M6C832MFE6	
	5400	76*116	29.6	13.9	LGR350M6C542MEB6		450sv	9500	76*217	15.1	23.6	LGR400M6C952MEN7
	6200	76*131	25.8	15.3	LGR350M6C622MED1		11000	89*192	15.8	24.7	LGR400M6C113MFK2	
	6400	89*106	29.9	14.6	LGR350M6C642MFA6		13000	89*217	13.1	27.5	LGR400M6C133MFN7	
	7000	76*141	22.9	16.7	LGR350M6C702MEE1		140	35*40	797.0	1.1	LGR451M5B140MA40	
	7500	89*116	25.7	16.3	LGR350M6C752MFB6		220	35*55	438.0	1.7	LGR451M5B220MA55	
	8700	89*131	22.5	18.0	LGR350M6C872MFD1		330	35*65	337.0	2.1	LGR451M5B330MA65	
	400sv	9800	89*141	20.0	19.6		LGR350M6C982MFE1	420	35*55	264.0	2.6	LGR451M5B420MA55
		10000	76*192	17.1	21.8		LGR350M6C103MEK2	440	35*80	253.0	2.6	LGR451M5B440MA80
		10000	89*146	18.9	20.4		LGR350M6C103MFE6	520	35*55	213.0	3.1	LGR451M5B520MA55
		12000	76*217	14.2	24.3		LGR350M6C123MEN7	550	35*90	203.0	3.1	LGR451M5B550MA90
		15000	89*192	14.9	25.4		LGR350M6C153MFK2	600	50*55	228.0	3.0	LGR451M5B600MC55
		17000	89*217	12.4	28.3		LGR350M6C173MFN7	660	35*106	169.0	3.5	LGR451M5B660MAA6
	400v	160	35*40	652.0	1.3		LGR400M5B160MA40	670	35*80	165.0	3.7	LGR451M5B670MA80
250		35*55	408.0	1.8	LGR400M5B250MA55	680	50*65	178.0	3.6	LGR451M5B680MC65		
380		35*65	273.0	2.3	LGR400M5B380MA65	760	35*116	146.0	3.9	LGR451M5B760MAB6		
500		35*80	205.0	2.9	LGR400M5B500MA80	870	35*131	128.0	4.4	LGR451M5B870MAD1		
570		35*55	189.0	3.0	LGR400M5B570MA55	980	35*141	114.0	4.8	LGR451M5B980MAE1		
610		35*65	174.0	3.4	LGR400M5B610MA65	1000	35*106	107.0	5.1	LGR451M5B102MCA6		
630		35*90	164.0	3.4	LGR400M5B630MA90	1100	50*90	109.0	5.2	LGR451M5B112MC90		
750		35*106	137.0	3.9	LGR400M5B750MAA6	1200	65*65	116.0	5.2	LGR451M6C122MD65		
780		50*55	142.0	4.1	LGR400M5B780MC55	1300	35*116	91.1	5.7	LGR451M5B132MAB6		
790		35*65	134.0	4.1	LGR400M5B790MA65	1400	50*106	89.5	6.0	LGR451M5B142MCA6		
880		35*116	118.0	4.4	LGR400M5B880MAB6	1500	65*80	81.1	6.6	LGR451M6C152MD80		
1000		35*131	104.0	4.9	LGR400M5B102MAD1	1600	35*141	70.2	7.0	LGR451M5B162MAE1		
1100		35*141	92.4	5.3	LGR400M5B112MAE1	1700	50*116	76.0	6.8	LGR451M5B172MCB6		
1200		35*106	85.5	5.7	LGR400M5B122MAA6	500sv	1900	50*130	66.1	7.5	LGR451M5B192MCD0	
1300		50*90	85.0	5.9	LGR400M5B132MC90		2200	76*80	63.8	8.3	LGR451M6C222ME80	
1500		35*116	72.9	6.4	LGR400M5B152MAB6		2400	65*106	54.7	8.8	LGR451M6C242MDA6	
1600		50*106	69.8	6.8	LGR400M5B162MCA6		2700	76*90	49.8	9.9	LGR451M6C272ME90	
1700		35*131	63.4	7.1	LGR400M5B172MAD1		2800	65*116	46.4	9.9	LGR451M6C282MDB6	
1800		65*80	65.3	7.3	LGR400M6C182MD80		3200	65*131	40.4	11.0	LGR451M6C322MDD1	
1900		35*141	56.2	7.8	LGR400M5B192MAE1		3300	76*106	38.2	11.8	LGR451M6C332MEA6	
450sv		2000	50*116	59.3	7.7		LGR400M5B202MCB6	3600	65*141	35.4	12.1	LGR451M6C362MDE1
		2100	50*131	51.7	8.5		LGR400M5B212MCD1	3900	76*116	35.7	12.6	LGR451M6C392MEB6
		2200	65*90	52.0	8.6		LGR400M6C222MD90	4500	76*131	30.9	14.0	LGR451M6C452MED1
		2300	76*80	57.5	8.8		LGR400M6C232ME80	4600	89*106	30.3	14.5	LGR451M6C462MFA6
		2400	50*141	45.9	9.3		LGR400M5B242MCE1	5100	76*141	27.4	15.3	LGR451M6C512MEE1
		2600	65*106	42.8	9.9		LGR400M6C262MDA6	5400	76*146	26.0	15.9	LGR451M6C542MEE6
		3000	76*90	44.9	10.4		LGR400M6C302ME90	5400	89*116	25.7	16.3	LGR451M6C542MFB6
		3100	65*116	35.6	11.3		LGR400M6C312MDB6	6300	89*131	22.4	18.0	LGR451M6C632MFD1
		3500	65*131	31.7	12.4		LGR400M6C352MDD1	7100	89*141	19.9	19.7	LGR451M6C712MFE1
		3600	76*106	37.0	11.9		LGR400M6C362MEA6	7500	89*146	18.8	20.5	LGR451M6C752MFE6
		4000	65*141	31.5	12.8		LGR400M6C402MDE1	8200	76*192	20.3	20.0	LGR451M6C822MEK2
		4300	76*116	28.1	14.2	LGR400M6C432MEB6	8700	76*217	16.8	22.4	LGR451M6C872MEN7	
4900		76*131	27.4	14.8	LGR400M6C492MED1	10000	89*192	15.1	25.2	LGR451M6C103MFK2		
5100		89*106	31.9	14.1	LGR400M6C512MFE1	11000	89*217	12.7	28.0	LGR451M6C113MFN7		
5600		76*141	24.4	16.2	LGR400M6C562MEE1	500v	100	35*40	1224.0	0.9	LGR500M5B100MA40	
5900		76*146	23.1	16.9	LGR400M6C592MEE6		150	35*55	722.0	1.3	LGR500M5B150MA55	
6000		89*116	27.4	15.8	LGR400M6C602MFB6		220	35*65	546.0	1.7	LGR500M5B220MA65	
6900		89*131	23.9	17.5	LGR400M6C692MFD1		260	35*55	498.0	1.9	LGR500M5B260MA55	
7800		89*141	21.2	19.0	LGR400M6C782MFE1		300	35*80	410.0	2.3	LGR500M5B300MA80	
8200		76*192	18.2	21.2	LGR400M6C822MEK2		330	50*55	393.0	2.4	LGR500M5B330MC55	



500v	370	35*80	347.0	2.4	LGR500M5B370MA80	500v	2200	65*131	61.1	8.9	LGR500M6C222MDD1
	380	35*90	328.0	2.7	LGR500M5B380MA90		2400	65*141	54.7	9.7	LGR500M6C242MDE1
	460	35*106	293.0	2.9	LGR500M5B460MAA6		2400	76*106	55.4	9.8	LGR500M6C242MEA6
	480	50*65	274.0	2.9	LGR500M5B480MC65		2800	76*116	48.1	10.9	LGR500M6C282MEB6
	480	35*80	265.0	2.9	LGR500M5B480MA80		3300	76*131	43.1	11.8	LGR500M6C332MED1
	530	35*116	261.0	2.9	LGR500M5B530MAB6		3400	89*106	40.1	12.6	LGR500M6C342MFA6
	610	35*131	231.0	3.3	LGR500M5B610MAD1		3700	76*141	37.5	13.1	LGR500M6C372MEE1
	620	35*90	202.0	3.5	LGR500M5B620MA90		3900	76*146	35.5	13.6	LGR500M6C392MEE6
	650	50*80	200.0	3.7	LGR500M5B650MC80		4000	89*116	34.1	14.2	LGR500M6C402MFB6
	690	35*141	195.0	3.7	LGR500M5B690MAE1		4700	89*131	30.0	15.6	LGR500M6C472MFD1
	760	35*106	169.0	4.0	LGR500M5B760MAA6		5200	89*141	28.0	16.6	LGR500M6C522MFE1
	770	65*65	171.0	4.3	LGR500M6C770MD65		5400	76*192	27.9	17.1	LGR500M6C542MEK2
	820	50*90	156.0	4.4	LGR500M5B820MC90		5600	89*146	26.0	17.4	LGR500M6C562MFE6
	890	35*116	143.0	4.6	LGR500M5B890MAB6		6300	76*217	23.1	19.1	LGR500M6C632MEN7
550sv	960	50*106	136.0	4.9	LGR500M5B960MCA6	7600	89*192	20.5	21.8	LGR500M6C762MFK2	
	1000	35*131	125.0	5.1	LGR500M5B102MAD1	8800	89*217	16.7	24.4	LGR500M6C882MFN7	
	1100	50*116	115.0	5.5	LGR500M5B112MCB6	550sv	1400	65*106	170.5	4.9	LGR550M6C142MDA6
	1100	65*106	122.0	5.4	LGR500M6C112MDA6		1600	65*116	132.6	5.9	LGR550M6C162MDB6
	1200	35*141	110.0	5.6	LGR500M5B122MAE1		1900	65*130	1117.7	6.8	LGR550M6C192MDD0
	1300	50*131	100.0	6.1	LGR500M5B132MCD1		2200	76*106	90.4	7.8	LGR550M6C222MEA6
	1400	65*90	95.1	6.4	LGR500M6C142MD65		2300	65*141	86.5	7.8	LGR550M6C232MDE1
	1500	50*141	88.9	6.7	LGR500M5B152MCE1		2500	76*116	79.6	8.4	LGR550M6C252MEB6
	1600	76*80	86.4	7.1	LGR500M6C162ME80		2900	76*131	64.0	9.7	LGR550M6C292MED1
	1800	65*106	78.1	7.4	LGR500M6C182MDA6		3300	76*141	54.6	10.9	LGR550M6C332MEE1
	2000	65*116	66.3	8.3	LGR500M6C202MDB6		3700	76*146	50.2	12.24	LGR550M6C372MEE6
2100	76*90	67.4	8.5	LGR500M6C212ME90	5100		76*192	36.4	16.22	LGR550M6C512MEK2	

此外, $\phi 100$ 的产品是暂定规格, 订购的时候请进行确认。

◆ 额定纹波电流频率修正系数

纹波频率与标准品一览表的规定值相异时, 请使用小于乘以下表系数所得之值的值。

● 频率修正系数

频率 (HZ)	120	300	1K	3K
修正系数	1.0	1.1	1.3	1.4

※ 铝电解电容器由于在纹波电流叠加时自我发热、温度上升而老化, 第升温 5~10℃ 寿命减少一半。

要想保持长寿命请在使用过程中降低纹波电流。此外, 额定电压的 80% 以上到额定电压范围内可通过降低电压延长寿命。